

PARTNERS in HOPE

Noel House Programs • Rose of Lima House

Newsletter June 2006

Noel House Programs

Mailing Address:
120 Bell Street #103
Seattle, WA 98121
Phone: (206) 441-3210
Fax: (206) 441-0350
Web: www.noelhouse.org

Gillian Parke
Director
gillian@noelhouse.org

Kirsten Rogers
Volunteer Coordinator
kirsten@noelhouse.org

Services Coordinator
services@noelhouse.org

Rose of Lima House

Mailing Address:
120 Bell Street
Seattle, WA 98121
Phone: (206) 441-1200
Fax: (206) 770-9510
Web: www.rosehouse.org

Cynthia Shaw
Director
cynthia@rosehouse.org

Fund Development Noel House Programs Rose of Lima House

(206) 956-9366
devo@noelhouse.org



Shelter City Funding Reinstated

It is with great happiness that we share with our friends some exciting news:
The City of Seattle Shelter Funding has been reinstated!

On Thursday, April 20th Noel House Programs learned that the City of Seattle will reinstate our shelter funding at the 2005 level. This decision makes it possible to keep the doors open at St. Mark's and our other shelter programs for all of 2006.

Thank you for the tremendous show of support and advocacy for Noel House Programs. The postcards and letters, the phone calls and the meetings with Council members all made a positive impact on our elected officials. Our collective voice has helped keep our most vulnerable community members safe off the streets for the rest of the year.

On Easter Eve City Council Member Sally Clark visited St. Mark's shelter. Following her evening of volunteering Ms. Clark sent a letter of thanks:

Thank you for the opportunity to help out last Saturday. Together Noel House and St. Mark's provide an amazing service. Being there gives me a better understanding of who the women are and the help they need. Thank you (and thank you St. Mark's) for being a partner in the work.

Please take a few minutes to contact the Mayor and City Council members to thank them for reinstating our shelter funding.

Mayor Greg Nickels	(206) 684-4000	Peter Steinbrueck	(206) 684-8804
Richard McIver	(206) 684-8800	Richard Conlin	(206) 684-8805
Jan Drago	(206) 684-8801	David Della	(206) 684-8806
Sally Clark	(206) 684-8802	Jean Godden	(206) 684-8807
Nick Licata	(206) 684-8803	Tom Rasmussen	(206) 684-8808

Noel House Programs send our profound thanks to the City for reinstating funding, and to our friends who supported us through these past few months.

Thank you for being there for us.



Auction items needed!

Auction items are needed for
Rose of Lima's annual benefit event.

Rose of Lima is gearing up for our annual event: Salmon at Sunset. This will be the 12th year Rose House has celebrated with community friends over mouth watering appetizers, a silent auction and delicious dessert.

We need your support to make this event a success—donate an item to our auction. If you have something

you'd like to
donation please

**call the
Development
Office at
206-956-9366.**



Volunteer Times

The value of the volunteer hour is rising.

We have always known how valuable a volunteer's gift of time and talent is to our programs but now we have a numeric way to measure your contributions.



Independent Sector (IS), a coalition of philanthropic organizations dedicated to strengthening the nonprofit sector, has announced that the value of a volunteer hour was \$18.04 in 2005 — a 49 cent increase from 2004.

How did the IS put a value on volunteers? Their estimate is based on the average hourly earnings of all non-agricultural workers as determined by the Bureau of Labor Statistics. IS took that number and increased it by 12%. Nationally, IS estimates the total value of hours volunteered in 2004 was equivalent to approximately \$280 billion of contributed services.

What do the numbers look like at Noel House Programs?

In 2005, 604 volunteers served a total of 8,082 hours. Your volunteer contributions are worth \$145,799.28!!! Noel House knows a little secret that the IS overlooked — our volunteers are priceless!

"It is a challenge to place a dollar value on the important work volunteers do for millions of charitable organizations and communities across the country. But this number can help put into perspective the enormous contributions provided by our nation's volunteers."

~ IS President and CEO Diana Aviv

Want to volunteer? kirsten@noelhouse.org
206-956-9366, ext. 2

Sponsor our Annual



As summer approaches so does the picnic season. Every year Noel House Programs staff and volunteers throw a picnic for Noel House ladies.

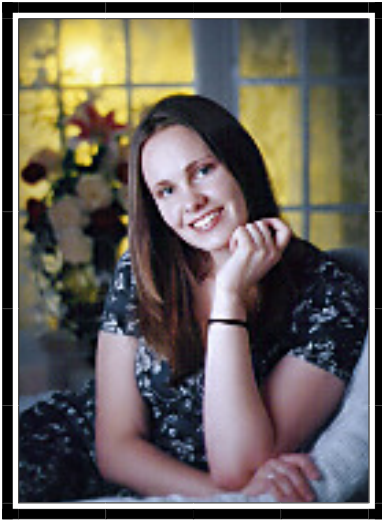
We are looking for a group of friends who would like to host this year's picnic. Your group would provide the food, fun and activities for the event.

The 2006 picnic will be held on July 19, 2006 from noon to 3:00pm at Madrona Park on beautiful Lake Washington.

**Call our Services Coordinator at (206) 441-3210
ext. 200 to find out how to get involved.**

Remembering Volunteer Kristin Leigh Roach

December 25, 1984 - April 25, 2006



April 25, 2006 marks the unexpected passing of a treasured volunteer and a vibrant young adult. Kristin Leigh Roach came to Noel House to volunteer and gave so much more than her time and energy. She gave her heart and her passion and a genuine desire to help women in need. My eyes are watering as I write this tribute, because Kristin brought so much light and life into our community.

Kristin was an exceptional volunteer whom I was honored to supervise in her various roles at Noel House. She arrived at Noel House through a class she was taking at Seattle University Winter of 2005. On her application she expressed her motivation to volunteer as a desire to learn: “To learn from the women—about myself and their lives.” I’ve never seen anyone so excited at a volunteer orientation. Kristin’s infectious enthusiasm to do good work supporting others is only one of the many reasons she was an incredibly valued member of our community.

Kristin kept her plate full. Not only did she volunteer at Noel House serving dinner, she helped with our knitting group and with the 2005 Annual Picnic set-up. Outside of her time volunteering Kristin was a full-time student at Seattle University (SU) pursuing fine arts. She was deeply involved with her school: radio DJ for KSUB, member of the choir, and employee at SU’s Lynn Collegium. She also worked at the Frye Art Museum Restaurant. Other great loves in her life were her bass guitar, playing music with her brothers and her band.

All of us at Noel House—shelter residents, staff and other volunteers—were given a gift by her presence. **Thank you, Kristin Leigh Roach, and blessing on your journey**

With gratitude, Kirsten Rogers, Volunteer Coordinator

A heartfelt thanks to Kristin’s family, friends and colleagues for contributing to Noel House in her memory.

**Noel House Programs, Rose of Lima House
and Dorothy Day House PRESENT:**

ART FAIR 2006

Support homeless and formerly homeless artists in our community. Artists from Noel House women’s shelter, Rose of Lima House and Dorothy Day House invite you to browse through a creative collection of handmade items.

All proceeds benefit the artists.

Saturday, July 8th

11:00 am to 5:00 pm

The Art Fair will be held at the Noel House shelter ~ entrance in the alley!

Questions? Call Case Manager Alice at (206) 441-3210 extension 203.

- Please indicate changes in the boxes below and return the address label in the enclosed envelope.
- Remove from the mailing list
 - Change name or address
 - I am receiving a duplicate

Noel House Programs • Rose of Lima House
120 Bell Street, Seattle, WA 98121

PARTNERS (in) HOPE



Non-Profit Org.
 U.S. Postage
PAID
 Seattle, WA
 Permit #6602

Volunteers are the backbone of Noel House Programs. Please consider committing to a few hours a week in support of homeless single women in Seattle. Serve a meal, plan an activity, clean up a room...ladies only during the evening, but men can help during the day! **Call Kirsten at 206-956-9366 ext. 2 if you'd like to help.**

* most needed

Noel House Wish List

Shelter Supplies:

- Laundry soap
- Lysol spray
- Dish soap*
- 33 gallon trash bags*
- Latex gloves (medium)*
- Toilet paper
- Black ink pens
- Printer paper
- Twin size sheets
- Blankets
- Pillows

Kitchen Supplies:

- Powdered drink mix*
- Jelly/Jam*
- Coffee creamer*
- Plastic utensils
- Hot/cold cups (8oz.)
- Cereal bowls
- Tea
- Coffee grinder*
- Napkins

Personal Items:

- Shampoo/Conditioner
- Tums
- Cough drops
- Cold medicine *
- Ibuprofen *
- Mini locks with keys
- Nail clippers
- Socks (new)*
- Underwear (new)*

Call our Services Coordinator at 206-441-3210 ext. 200 for the latest and most urgent needs!

Rose House Wish List

- Office supplies
- Custodial supplies
- Paper towels
- New iron
- Cereal bowls
- Coffee (regular)

Can you provide one of these items once a month? Please let us know! 206-441-1200

Join our Rapid Response Team. Receive email alerts of our most urgent needs. Email RRT@noelhouse.org

